



U.S. Navy

**RESCUED FISHERMAN**—The wife and children of Heisei Shinsato, skipper of the fishing vessel *Osprey*, were on hand to greet him yesterday, as he arrived at Pearl Harbor aboard the refrigerator ship, *USS Pictor*. Captain Shinsato and his five man crew abandoned the *Osprey* Monday 20 miles off French Frigate Shoals.

## 10 Navy Ships in Port

### Six *Osprey* Survivors Arrive on *USS Pictor*

Ten navy ships—one carrying six Island fishermen whose boat sank at sea Monday—made port at Pearl Harbor yesterday. From the Far East came the refrigerator ship *USS Pictor* and the fleet oiler *USS Cacapon*.

From the west coast came four destroyers—the *Wadleigh*, *Remy Cassin*, *Young* and *Monssen*—and four destroyer-escorts—*William Seiverling*, *Ulvert M. Moore*, *Wiseman* and *Currier*.

### Baccalaureate Service Sunday At Kamehameha

The Kamehameha schools will hold their traditional baccalaureate chapel service in honor of the graduating class at 11 a.m. Sunday, in the auditorium on Kapa-lama heights.

The Rev. Samuel M. Saffery, pastor of the Liliuokalani church of Wai'alua, Oahu, will deliver the sermon titled "I Am Ready."

Momilani Soong and George Koani, junior class presidents, will participate in scripture readings. Puanani Mundon, senior organist of the Girls' School will play the processional.

The choir, under the direction of Harold B. Turney, will sing

**THE PICTOR CARRIED** the survivors of the fishing boat *Osprey*, which went down near French Frigate shoals Monday morning.

Families and friends were waiting on the pier to greet them when the *Pictor* docked.

The reefer ship picked up the six men from a lifeboat as she was returning from an eight-month tour of supply duty during which she fed 9,000 tons of cargo to 1,046 ships.

A reefer ship's mission is to replenish navy vessels at sea in the forward area to give the warships more time in the forward areas.

**THE CACAPON** is back from

## TH Civil Service Hassle

### UPW Charges Johnstone Unfit To Be Commissioner

A United Public Workers official has charged that Territorial Civil Service Commissioner Will B. Johnstone is "unfit" for his post because of his "recent conduct and public utterances" leaders.

The accusation came from Jackson Ah Chin, president of the UPW's Oahu division. In a letter to Mr. Johnstone dated May 24, the union official suggested that the commissioner resign.

**THE ACCUSATION** stemmed from Mr. Johnstone's stand at the recent Maui conference of civil service commissioners against permitting UPW leaders to participate in a panel discussion. Mr. Johnstone took this position on grounds of alleged Communist connections of the officials.

The UPW official outlined six major charges against the commissioner and said "if you accept them as true, you should in all decency resign." He invited the commissioner to explain things at a forthcoming union meeting because "you should have a chance to defend yourself."

**MR. JOHNSTONE** termed the two-page letter, made public by UPW, "purely a piece of propaganda."

"My service on the territorial civil service commission is at the pleasure of the governor and the territorial senate," he said. "Any complaints about my service as a commissioner should be directed to the governor and the senate. I believe that my actions at the recent conference need not be defended before anyone but the ap-



**WILL B. JOHNSTONE**  
UPW Doesn't Like Him

pointing and confirming authority."

Mr. Johnstone said he had no intention of appearing at the union meeting.

**THE UNION LETTER** accused the commissioner of a "hit-and-run smear attack" against its leaders at the Maui conference. They are Henry Epstein, Max Roffman and Stephen T. Murin. Mr. Roffman was the only one at the conference. The commissioners, by an 11 to 8 vote, decided to seat him on a panel, but the panel never was convened.

### Puerto Rican Party Leaders Jailed for Plot

**WASHINGTON, May 26 (UP)**—FBI agents today arrested 11 leaders of the Puerto Rican Nationalist party in New York city, Chicago, and Puerto Rico on charges of conspiring to overthrow the government of the United States.

**THE ARRESTS** were announced by Attorney General Herbert Brownell, Jr., and FBI Director J. Edgar Hoover.

Six of the arrests were made in Chicago, four in New York and one in Puerto Rico.

Puerto Rican Nationalists shot up the chamber of the house of representatives on March 1 and wounded five congressmen.

**PUERTO RICAN** Nationalists also attempted to assassinate former President Truman in November, 1951.

### Kam All-Schools

### Mainland Edition Of Time to Be Delivered Here

The mainland edition of *Time* magazine will be delivered to over 12,000 island readers beginning with next week's issue.

Hawaii has served by *Time's* Pacific edition since World War II. A second Pacific edition has been printed in Tokyo for distribution throughout Asia.

**IMPROVED** transportation facilities now make it possible to combine the two Pacific printings (except for Hawaii) and in Tokyo.

Meanwhile, copies of the mainland edition can be delivered in Hawaii the same day they are distributed on the mainland.

**"AS STATEHOOD** gets closer, it is only logical that readers in a Hawaii should get the U. S. edition," said *Time's* publisher, James A. Linen. "Time is glad to add this one additional tie between the mainland and the islands."



**RESCUED FISHERMAN**—The wife and children of Heisei Shinsato, skipper of the fishing vessel Osprey, were on hand to greet him yesterday as he arrived at Pearl Harbor aboard the refrigerator ship, USS Pictor. Captain Shinsato and his five man crew abandoned the Osprey Monday 20 miles off French Frigate Shoals.

## 10 Navy Ships in Port

# Six Osprey Survivors Arrive on USS Pictor

Ten navy ships—one carrying six Island fishermen whose boat sank at sea Monday—made port at Pearl Harbor yesterday. From the Far East came the refrigerator ship USS Pictor and the fleet oiler USS Cacapon.

## Baccalaureate Service Sunday At Kamehameha

The Kamehameha schools will hold their traditional baccalaureate chapel service in honor of the graduating class at 11 a.m. Sunday, in the auditorium on Kapa-lama heights.

The Rev. Samuel M. Saffery, pastor of the Liliuokalani church of Waiakua, Oahu, will deliver the sermon titled "I Am Ready."

Momilani Soong and George Koani, junior class presidents, will participate in scripture readings. Puanani Mundon, senior organizer of the Girls' School will play the processional.

The choir, under the direction of Harold B. Turney, will sing Noble Cain's arrangement of Dickson's "Thanks Be To God."

## THE LARGEST IN

- FIRST CHOICE FOR SERVICE
  - \* FREE TV & RADIO
  - \* UNEXCELLED FOOD
  - \* AMBLE PARKING
  - \* CENTRAL LOCATION
- RATES FROM \$5.

**LEAMINGTON HOTEL**  
OAKLAND, CALIFORNIA

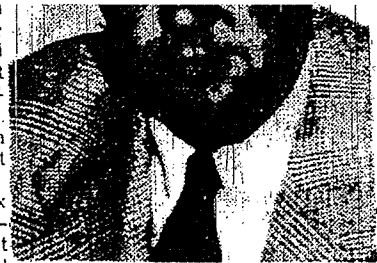
OAKLAND

**THE ACCUSATION** stemmed from Mr. Johnstone's stand at the recent Maui conference of civil service commissioners against permitting UPW leaders to participate in a panel discussion. Mr. Johnstone took this position on grounds of alleged Communist connections of the officials.

The UPW official outlined six major charges against the commissioner and said "if you accept them as true, you should in all decency resign." He invited the commissioner to explain things at a forthcoming union meeting because "you should have a chance to defend yourself."

**MR. JOHNSTONE** termed the two-page letter, made public by UPW, "purely a piece of propaganda."

"My service on the territorial civil service commission is at the pleasure of the governor and the territorial senate," he said. "Any complaints about my service as a commissioner should be directed to the governor and the senate. I believe that my actions at the recent conference need not be defended before anyone but the ap-



**WILL B. JOHNSTONE**  
UPW Doesn't Like Him

pointing and confirming authority."

Mr. Johnstone said he had no intention of appearing at the union meeting.

**THE UNION LETTER** accused the commissioner of a "hit-and-run smear attack" against its leaders at the Maui conference. They are Henry Epstein, Max Roffman and Stephen T. Murin. Mr. Roffman was the only one at the conference. The commissioners, by an 11 to 8 vote, decided to seat him on a panel, but the panel never was convened.

## Puerto Rican Party Leaders Jailed for Plot

WASHINGTON, May 26 (UP)—FBI agents today arrested 11 leaders of the Puerto Rican Nationalist party in New York city, Chicago, and Puerto Rico on charges of conspiring to overthrow the government of the United States.

**THE ARRESTS** were announced by Attorney General Herbert Brownell, Jr., and FBI Director J. Edgar Hoover.

Six of the arrests were made in Chicago, four in New York and one in Puerto Rico.

Puerto Rican Nationalists shot up the chamber of the house of representatives on March 1 and wounded five congressmen.

**PUERTO RICAN** Nationalists also attempted to assassinate former President Truman in November, 1951.

## Kam All-Schools Parade Sunday

The Kamehameha Schools will hold their annual all-schools parade Sunday, May 30 at 4 p.m., at which time approximately 1,000 students of the three schools will pass in review on the Mawaena field parade grounds on the upper campus.

Being jointly honored as reviewing officers will be Frank E. Midkiff, U.S. High Commissioner of the Trust Territories and a trustee of the Bishop Estate, and Harold W. Kent, president of the Kamehameha Schools. Awards will be presented.

The parade is open to the public.

## Mainland Edition Of Time to Be Delivered Here

The mainland edition of Time magazine will be delivered to over 12,000 island readers beginning with next week's issue.

Hawaii has served by Time's Pacific edition since World War II. A second Pacific edition has been printed in Tokyo for distribution throughout Asia.

**IMPROVED** transportation facilities now make it possible to combine the two Pacific printings (except for Hawaii) and in Tokyo.

Meanwhile, copies of the mainland edition can be delivered in Hawaii the same day they are distributed on the mainland.

"AS STATEHOOD gets closer, it is only logical that readers in Hawaii should get the U. S. edition," said Time's publisher, James A. Linen. "Time is glad to add this one additional tie between the mainland and the islands."

## Realty Board Opposes Survey

The Honolulu Realty board has notified the mayor and board of its objection to an expenditure for a survey of Honolulu rental conditions.

This was expressed in a brief letter from Philip W. Won, Realty board secretary.

He said the board of directors "does not see any justification for conducting a survey in connection with rent control."

Finance committee supervisors may decide tomorrow which of two survey bids will be accepted by the city.